

---

# YOUR HOME REMODELLED

## **F3 ARCHITECTS**



[www.f3architects.com](http://www.f3architects.com) e: [info@f3architects.com](mailto:info@f3architects.com) t: +44 (0)20 7267 8332

---



YOUR HOME REMODELLED

---

# REIMAGINING HOME

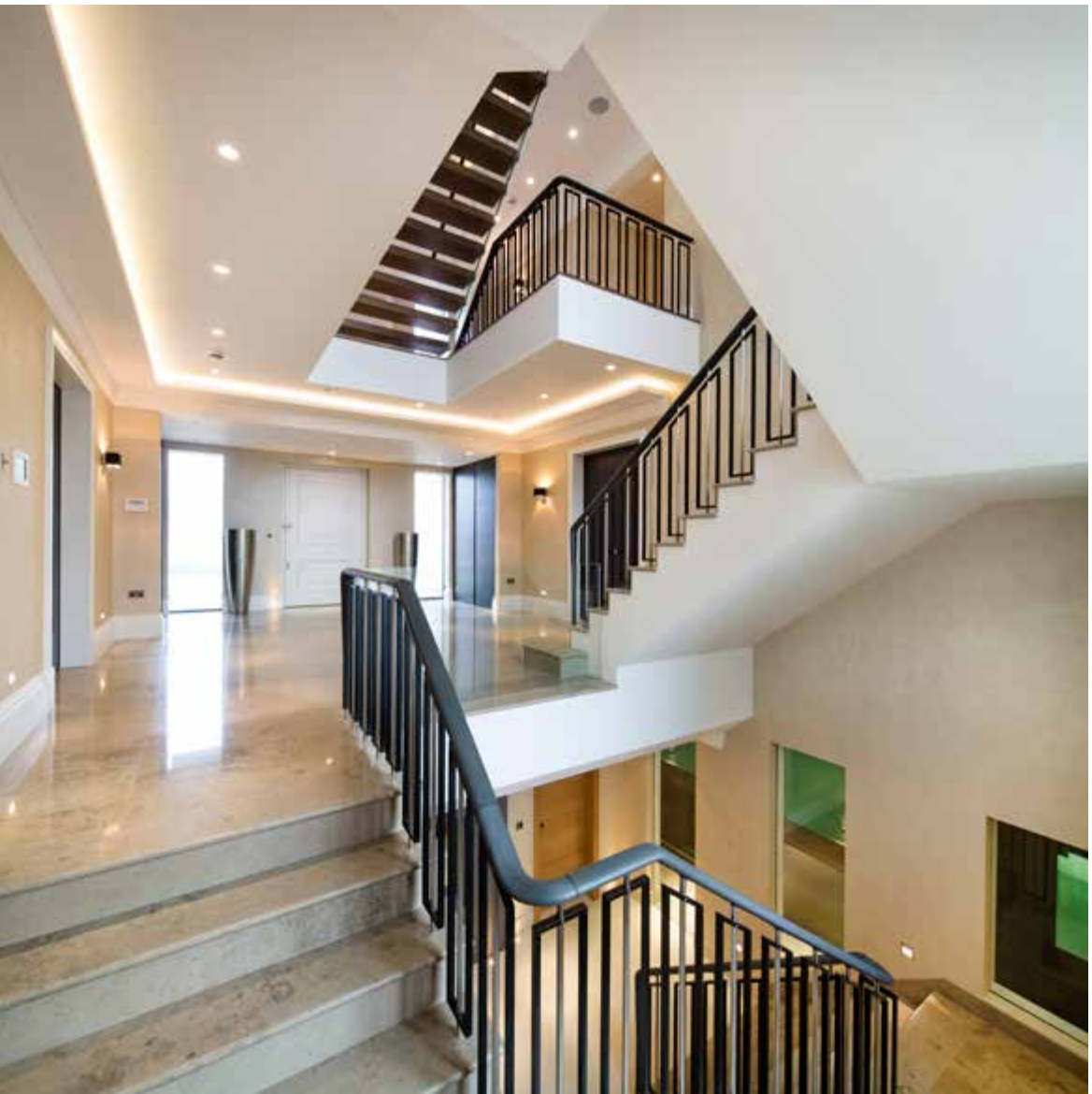
---



**YOUR HOME REMODELLED**

---

The first step is understanding you, your style, aspirations, and budget. Outlining exactly how you want to live in your home.





YOUR HOME REMODELLED

---

Designing your home.

At F3, we are Architects and Interior Designers. Innovative and inspiring design is at the core of everything we do, but first and foremost, we think about your home from the inside and how it works for your way of life.

Defining the challenge, uncovering the opportunities your home presents, and reimagining that space to unlock its full potential.





YOUR HOME REMODELLED

DESIGNED FOR HOW YOU WANT TO LIVE



YOUR HOME REMODELLED

A home which is a true reflection of how you want to live, work, and play.





YOUR HOME REMODELLED

The heart of the home.

Every home should be designed around a heart; the space where you will spend most of your time. Whether your focus is cooking, dining, or feet-up time on the couch, **the heart of the home** should be a true reflection of how you want to live.





**YOUR HOME REMODELLED**

---

Creating solutions to  
maximise value.

Whatever the scale, we will always find a  
way to develop your home and create a  
sense of luxury.





YOUR HOME REMODELLED

The ultimate add-ons.

Reimagining a home provides opportunity to go beyond the ordinary. A home gym, pool, spa, or sauna are the **ultimate add-ons** that can elevate your home to the next level of luxury.





YOUR HOME REMODELLED

---

The perfect leisure space.

The chance to create space for fun and games. Whether you're a cinema buff, gamer, an aspiring DJ, or you just want to kick back with a glass of wine, there is always an opportunity to create **the perfect leisure space** for you and your family.





YOUR HOME REMODELLED

---

# MATERIALISING THE DREAM





BESPOKE DESIGN CONCEPT SCHEME

For a fixed fee of between  
£8,000 - £15,000.

Subject to scale and complexity.

What you take home...

A thoughtfully planned and visualised bespoke  
concept design for your home, tailored specifically to  
how you want to live.

A concept design considering budget, site, and  
planning opportunities, suitable for:

- Understanding the potential to be realised from  
your property.
- First steps for discussion with Planning Authorities.
- Discussions with mortgage lenders and / or  
funders.
- Property promotions / sales.



Site appraisal and analysis.



Understanding and getting to know  
you, your aspirations and your budget.



Sketch design scheme.



Interim design review.



3D concept and project cost  
guidance.



Step inside your new home with  
optional VR headset experience.\*

*\*For an additional fee*



YOUR HOME REMODELLED

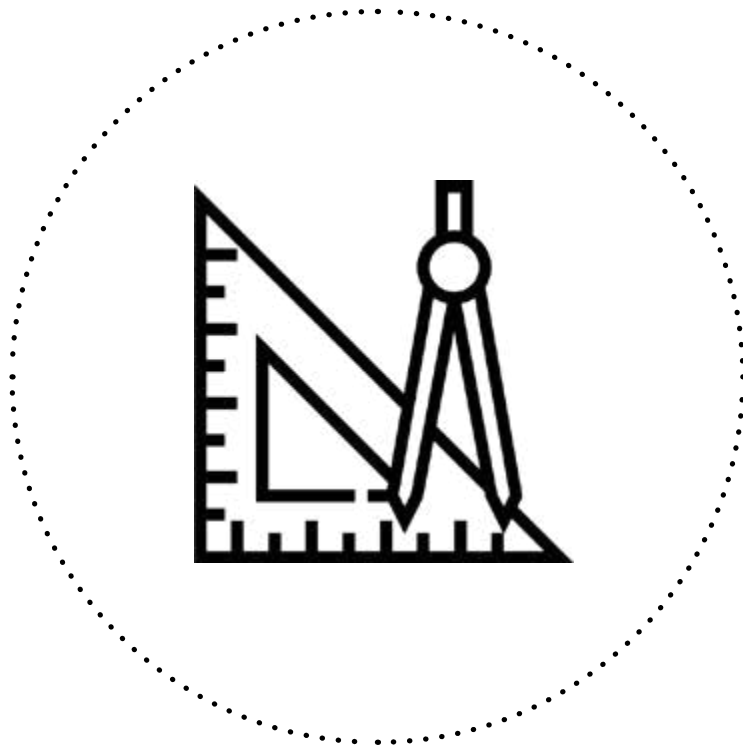
The next steps.



Appointing a design team.



Contact with local authority.



Generating surveys.

*Terms and conditions apply, enquire for details.*



GET IN TOUCH

---

CONTACT US...

WWW.F3ARCHITECTS.COM

E: INFO@F3ARCHITECTS.COM T: +44 (0)20 7267 8332

---



**WE MAKE HOMES PEOPLE CAN'T  
WAIT TO COME BACK TO**



---

COPYRIGHT 2020: F3 ARCHITECTS  
ALL RIGHTS RESERVED